



倍勝光電產品介紹



*The way of TP
revolution,
we drive it!*

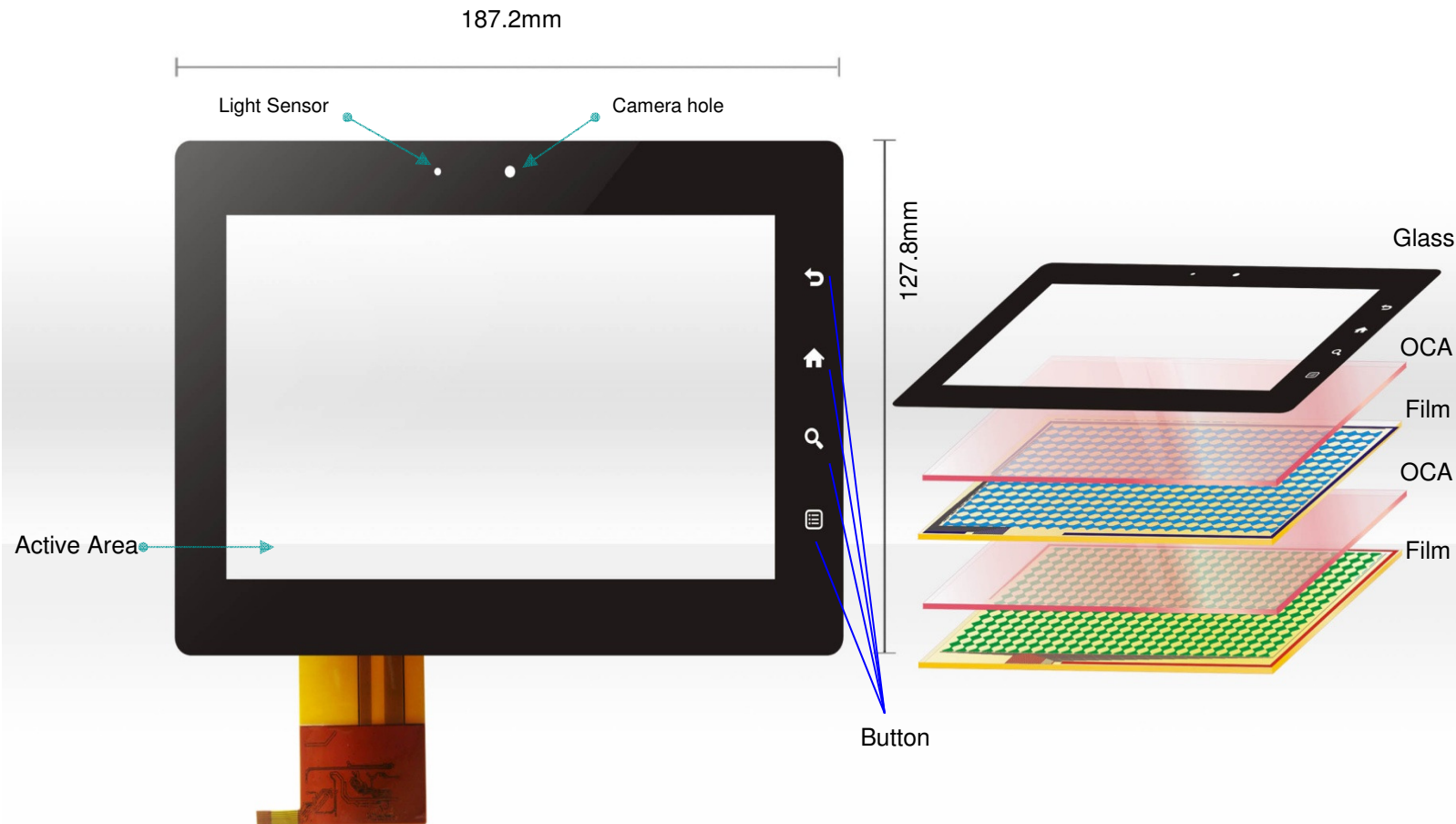
HWL (黃威龍)

w.l.huang@Bisonoptronics.com



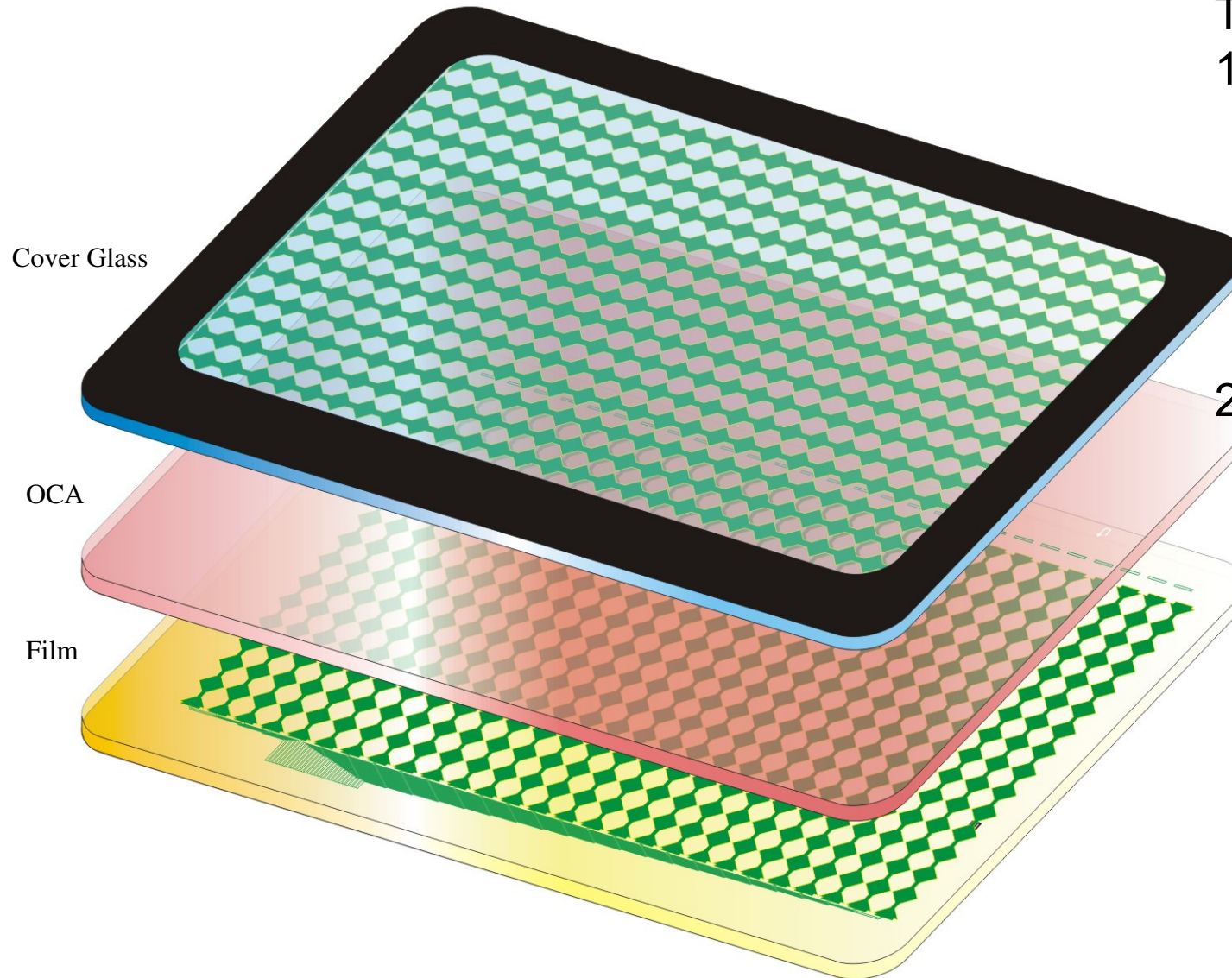
電容式觸控面板





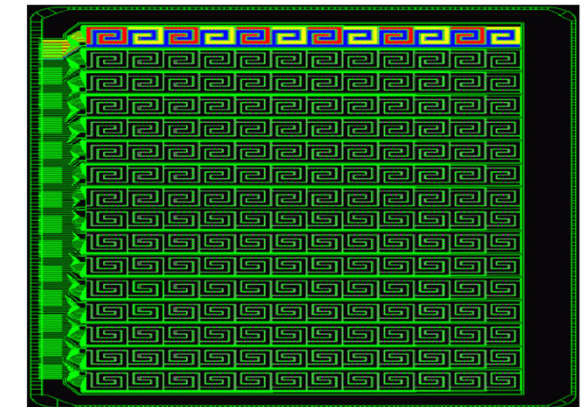
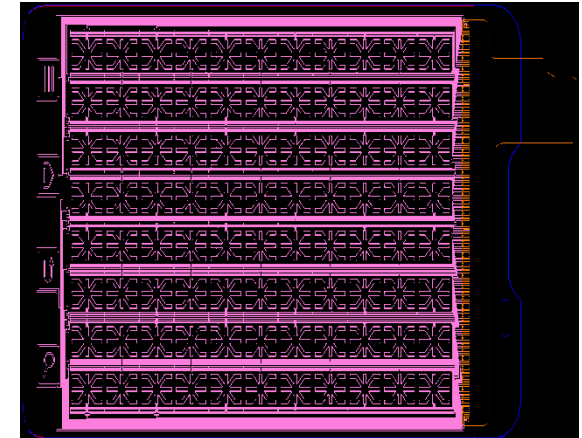
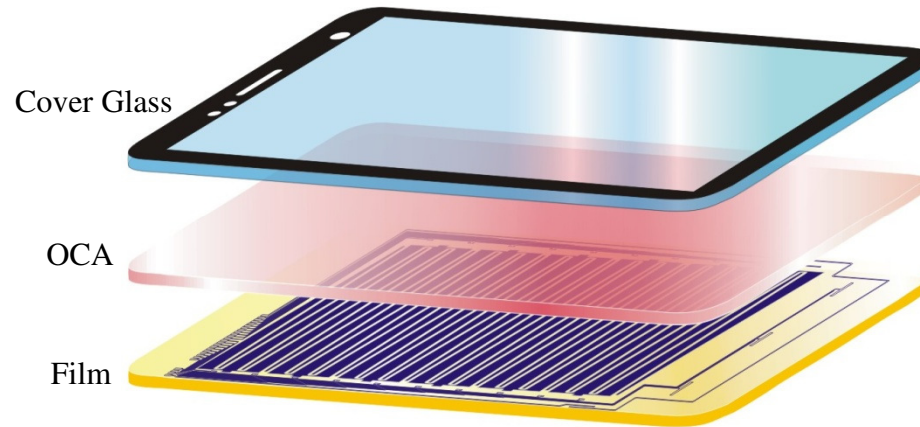
Technical Capacity:

1. Photo Image etch(Active Area): ITO Linewidth/Line Space : 15um /15um
2. Photo Image etch (Border Area): Copper Linewidth/Line Space : 30um /30um



Technical Capacity:

1. Photo Image etch(Active Area):
ITO
Linewidth/Line Space : 15um /15um
2. Photo Image etch (Border Area):
Copper
Linewidth/Line Space : 30um /30um



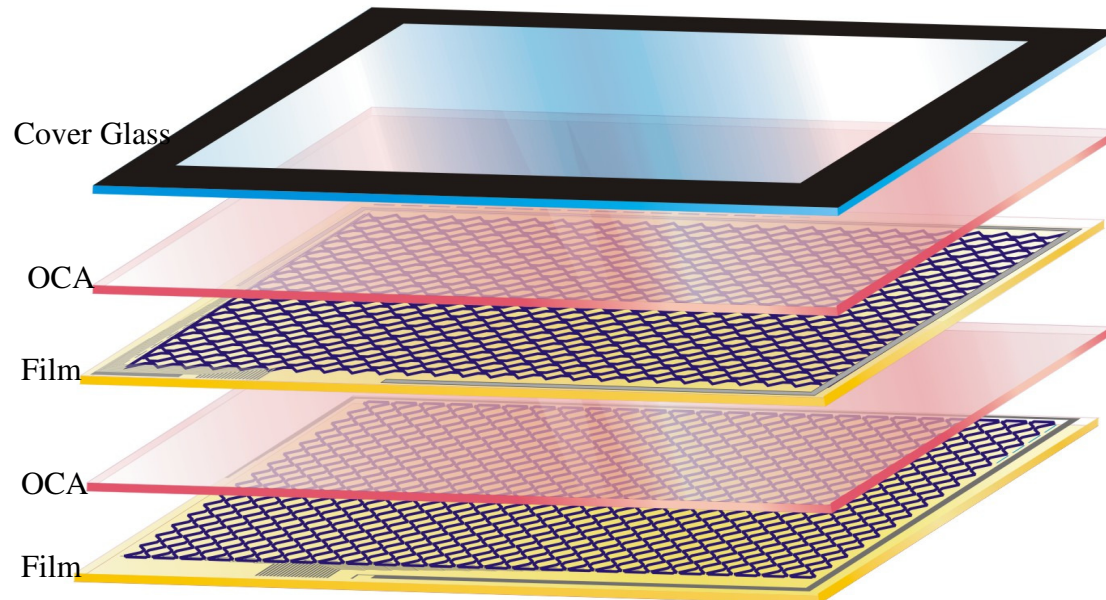
Technical Capacity:

1. Photo Image etch(Active Area): ITO Linewidth/Line Space : 15um /15um
2. Photo Image etch (Border Area): Cooper Linewidth/Line Space : 30um /30um



Technical Capacity:

1. Photo Image etch(Active Area):
Copper Linewidth/Line Space :
6um /6um
2. Photo Image etch
(Border Area): Copper Linewidth/
Line Space : 30um /30um



Metal Mesh 優勢：

1. 利用金屬導線取代ITO，就Film Sensor材料成本部分可以Cost Down 30%；對於大尺寸(15")以上成本優勢極大；
2. 黃光製程，線路區與ITO區一次完成，製程較短，製程成本較低；
3. 阻抗低所以不用雙邊跑線，線路設計簡單，且黃光製程製程可以做到細線路，觸控面板邊寬可以做到最小!!
4. 阻抗低所以做到70"左右的尺寸；
5. 因為阻抗較低，所以觸控靈敏度較好，觸控訊烙與抗干擾均較ITO Sensor為好!!



投射式電容 (Projective Capacitive Touch)

Mechanical		Reliability	
Available Size	3.5" ~ 42"	Operating temperature	-20°C to +60°C
Available Size	Finger/Gloved Hand /Pencil/Conductive Stylus	Storage temperature	-20°C to +70°C
Cover Glass Thickness	a. 0.55~ 3mm	High temperature Storage	80°C 240 hr
	b. Can be customized(Max. 9mm)	Low temperature Storage	-20°C 240 hr
FF Sensor Thickness	0.25mm~0.54mm	High temperature & High humidity Storage	60°C 90% RH 240 hr
Tail Design	FPC type or COF tail	Thermal Shock	-20°C ~ +70°C (1hr eachCycle,10Cycle)
Activation Force	no force need		

Optical		Durability	
Transmittance(T%)		Pencil Hardness	7H or higher per ASTM- D3363 (JIS-K5600)
a. None AR Coating(T%)	85%~88%	Touch Life	Unlimited
b. AR Coating (T%)	88%~91%		
Haze (h%)		Warranty	a. 1 year limited warranty b. depends on construct
a. None AG Coating(h%)	≤ 2%		
b. AG coating(h%)	3%/5%/9% optional		

Electrical (10 touches)

Windows Logo	Windows 7 & 8 logo verification
--------------	---------------------------------



Thank you!!

